

## HCD5MIH

www.honeywellvideo.com

### 720P TDN H.264 NETWORK CAMERA

Honeywell's latest addition to the EQUIP® Series of IP-based products, the HCD5MIH is a high definition, True Day/Night network camera that offers the latest in digital video surveillance. The HCD5MIH provides 720p resolution at full frame rate. The 1/4" CMOS network camera combines world-class imaging and camera technology with the EQUIP Series IP networking technology, providing streaming H.264 and MJPEG images with frames up to 30 frames per second (25 fps for PAL systems). The HCD5MIH supports the PSIA specification for interoperability between network video products.

The HCD5MIH day/night camera adapts to varying lighting conditions to ensure the highest picture quality even in extreme low light. When the light level drops too low for accurate video identification in color, the camera moves the IR cut filter out of the optical path and then switches to black and white video to capture more detail using the increased sensitivity of the CMOS sensor to IR light.

A powerful and intuitive web client allows fine tuning of the camera and auto iris levels. This can also be performed from most DVR/NVR setup utilities.

The HCD5MIH supports dual video streams and multiple compression formats with rates up to 30 frames per second (25 fps for PAL systems). The digital compression parameters for the two video streams are independently configurable. A third analog stream can be utilized as backup or for local viewing. It is also valuable when retrofitting onto an existing analog input DVR or encoder (full resolution not available).

The HCD5MIH has built-in Power over Ethernet (IEEE 802.3af) Class 1, which allows power to be supplied to the camera using standard network cabling, eliminating the need for a separate power supply and associated wiring. In retrofit situations where PoE switching does not exist, the unit can also be powered directly from 24 VAC.

#### Market Opportunities

The HCD5MIH is a network surveillance solution designed for object recognition that is required in locations where variable and low light conditions exist. Setup is quick and easy and can be customized through a web client or from an NVR. This provides optimum performance for both indoor and outdoor applications.

#### Features

- Outstanding image quality, 720p (1280 x 720) resolution
- 30 fps (25 fps PAL) progressive scan
- H.264 and MJPEG compression
- PSIA support
- Camera tamper detection
- Variable day/night threshold setting to accommodate switching to black and white images in low light
- Dual digital video streams simultaneously, independently configurable
- Remote firmware update
- Supports both dynamic and static IP addresses
- Includes advanced IP locator software to make system setup easy
- Web server for remote setup of camera video and network parameters
- Choice of 24 VAC or PoE IEEE 802.3af Class 1 power inputs
- Multiple levels of password protected remote access prevents unauthorized users from altering system settings
- Supports bidirectional audio

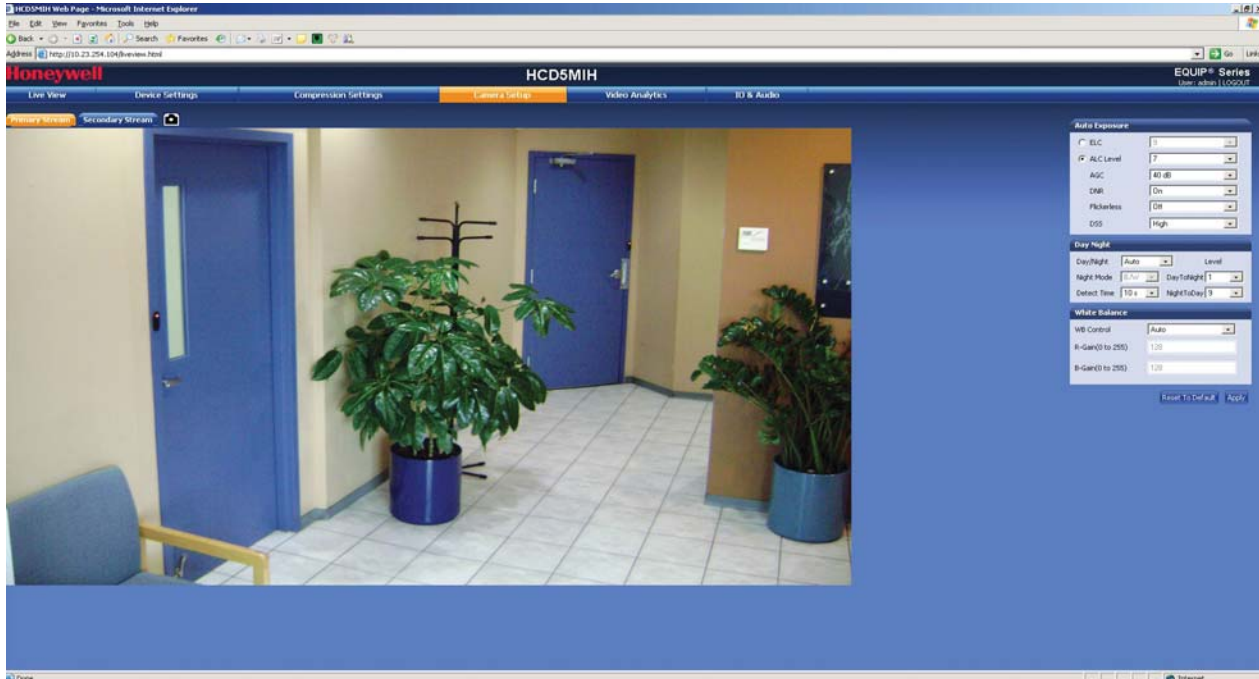


# HCD5MIH

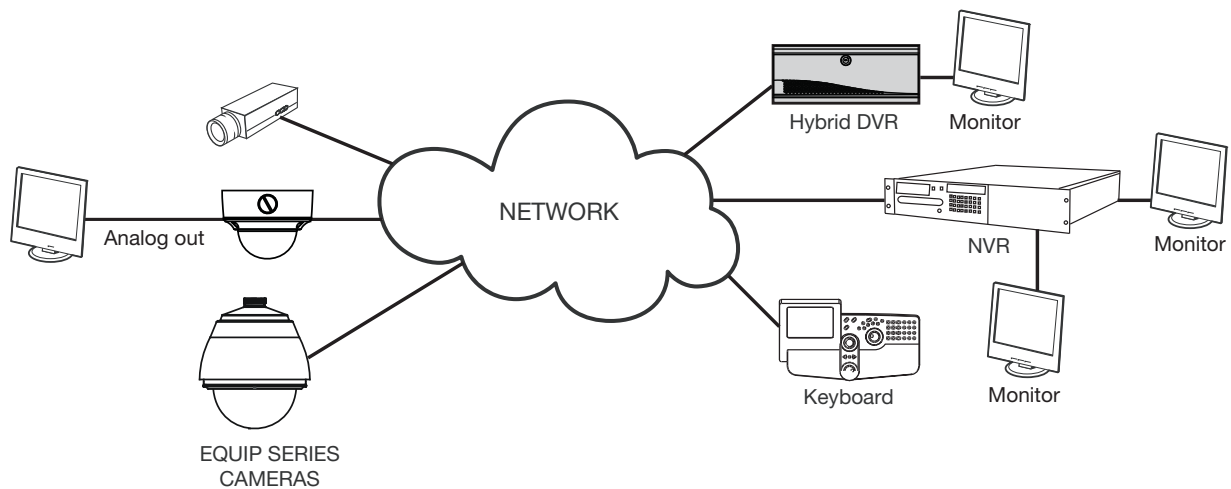
www.honeywellvideo.com

## SPECIFICATIONS

Like all cameras in the EQUIP IP Series, the HCD5MIH network camera uses Honeywell technology for video motion detection, tamper detection, remote firmware updating and for secure storage of all camera settings. Camera tamper detection notifies the user when a camera's field of view is altered, blinded or blurred. This ensures the video's integrity and alerts the customer to either a live event or a system problem that is causing disruption to the video stream. Honeywell's technology also allows users to remotely upload firmware to the camera. Setup is quick and easy and can be customized through a web client or from an NVR or DVR. The built-in web server provides password protected access to the camera's video and network setup.



## System Diagram



## SPECIFICATIONS

Operational	
Video Standard	NTSC, PAL
Scanning System	Progressive scan
Image Sensor	1/4" CMOS
Number of Pixels (H x V)	1280 x 720
Minimum Illumination	0.6 lux color/0.4 lux BW @ 50 IRE, F1.3 0.25 lux color/0.15 lux BW @ 30 IRE, F1.3
Automatic Lens Control	DC Iris Level 1-25
Video Output (AUX)	1.0 Vp-p @ 75 Ohms
S/N Ratio	50 dB or more (AGC off)
Auto Gain Control	Off/On, selectable (10-40 dB)
Automatic Electronic Shutter	1/60-1/24,500 sec (NTSC) 1/50-1/24,500 sec (PAL)
White Balance	AWC, AWC Push, Manual
Audio/Two-Way	Line in/out
Electrical	
Input Voltage	24 VAC, PoE IEEE 802.3af, Class 1
Input Range	17-28 VAC
Surge Suppression	1.5 kW transient
Power Consumption	5.0 W (max) 24 VAC 3.5 W (max) PoE
Mechanical	
Dimensions (W x H x D)	See Diagram
Weight	1.1 lb (.5 kg) camera only
Construction	Housing: Aluminum Finish: Cool Gray Powder Coat
Camera Mount	1/4-20 UNC mounting ring
Connector	Video Output: BNC connector Lens: 4 pin connector Power Input: Removable screw block Network: RJ45 connector Alarm I/O: Removable screw block Audio In: 3.5 mm mono phone jack Audio Out: 3.5 mm mono phone jack

Environmental			
Temperature	Operating: -22°F to +140°F (-30°C to +60°C) Storage: -40°F to +158°F (-40°C to +70°C)		
Relative Humidity	0% to 85%, non-condensing		
IP Specifications			
Video Compression	Dual stream H.264 and MJPEG		
Resolution	Bitrate H.264 (Typical)*	Frame Rate	Storage/Day (GB)
1280 x 720	1.8 Mbps	30/25	18.98
800 x 450	1.2 Mbps	30/25	12.65
640 x 360	0.6 Mbps	30/25	6.33
320 x 180	0.21 Mbps	30/25	0.89
Frame Rate NTSC/PAL	Up to 30/25 fps video in all resolutions		
Video Streaming	Dual streaming: Controllable frame rate and bandwidth Constant or variable bit rate		
Security	Multiple user access levels with password protection		
Users	1 Administrator, 3 Guests		
Video Access from Web Browser	Camera live view for 1 client. Full control of all camera settings available to administrator		
Minimum Web Browsing Requirements	Pentium IV CPU 3.0 GHz or equivalent AMD, 512 MB RAM, AGP graphics card (32 MB RAM) Windows® XP 2000, Internet Explorer 6.0 or later		
Installation and Management Maintenance	Honeywell IP Utility software identifies the IP address, checks status of device, firmware upgrades over HTTP		
Supported Protocols	HTTP, TCP, RTSP, RTP, UDP, ARP, DNS, RTCP, FTP, ICMP, DHCP, Bonjour, IGMP, Telnet		
Standards	PSIA support		
Regulatory			
Emissions	FCC, CE (EN55022)		
Immunity	CE (EN55024)		
Safety	EU: 2001/95/EC GPSD, UL 60950-1		

\*Actual bitrate is scene and motion dependent with H.264 stream.

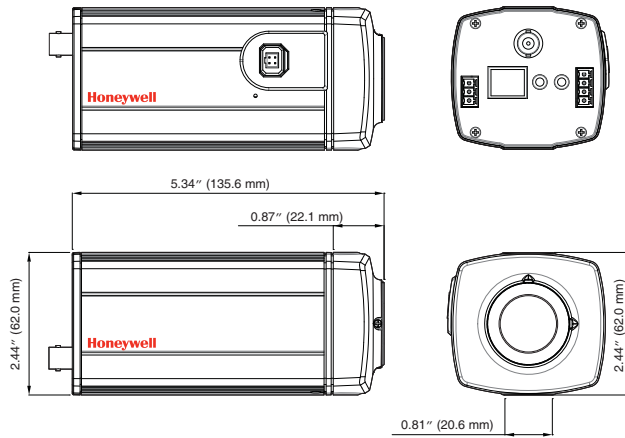
## SPECIFICATIONS

System Integration
<b>Open IP Integration</b>
PSIA support and open API for real interoperability between Honeywell and other manufacturers' IP-enabled security devices. Refer to the Honeywell Open Technology Alliance [ <a href="http://www.honeywell.com/security/hota">http://www.honeywell.com/security/hota</a> ] to learn more about our open and integrated solutions.

Accessories	
Housing and Mounts	
HBC5WT	Wall/ceiling mount bracket
HHC12	Environmental housing
Recommended Lens Options*	
HLD3V8MPD	3-8 mm High definition megapixel lens
HLM45V13MPD	4.5-13.2 mm High definition megapixel lens

**NOTES:**

\*Only a high definition megapixel lens should be used with the HCD5MIH camera.



Ordering	
HCD5MIH	Network True Day/Night, 1/4" Progressive Scan, CMOS, 720p Resolution Camera, 24 VAC or PoE IEEE 802.3af Class 1, H.264, NTSC
HCD5MIHX	Network True Day/Night, 1/4" Progressive Scan, CMOS, 720p Resolution Camera, 24 VAC or PoE IEEE 802.3af Class 1, H.264, PAL

**NOTE:** Honeywell reserves the right, without notification, to make changes in product design or specifications.

**Automation and Control Solutions**

Honeywell Systems  
 2700 Blankenbaker Pkwy, Suite 150  
 Louisville, KY 40299  
 1.800.323.4576  
 www.honeywell.com

